

Dr Sally Pearson

Chair of South West Clinical Senate

*2020 Clinical Senate Council Review
and Planning Meeting*



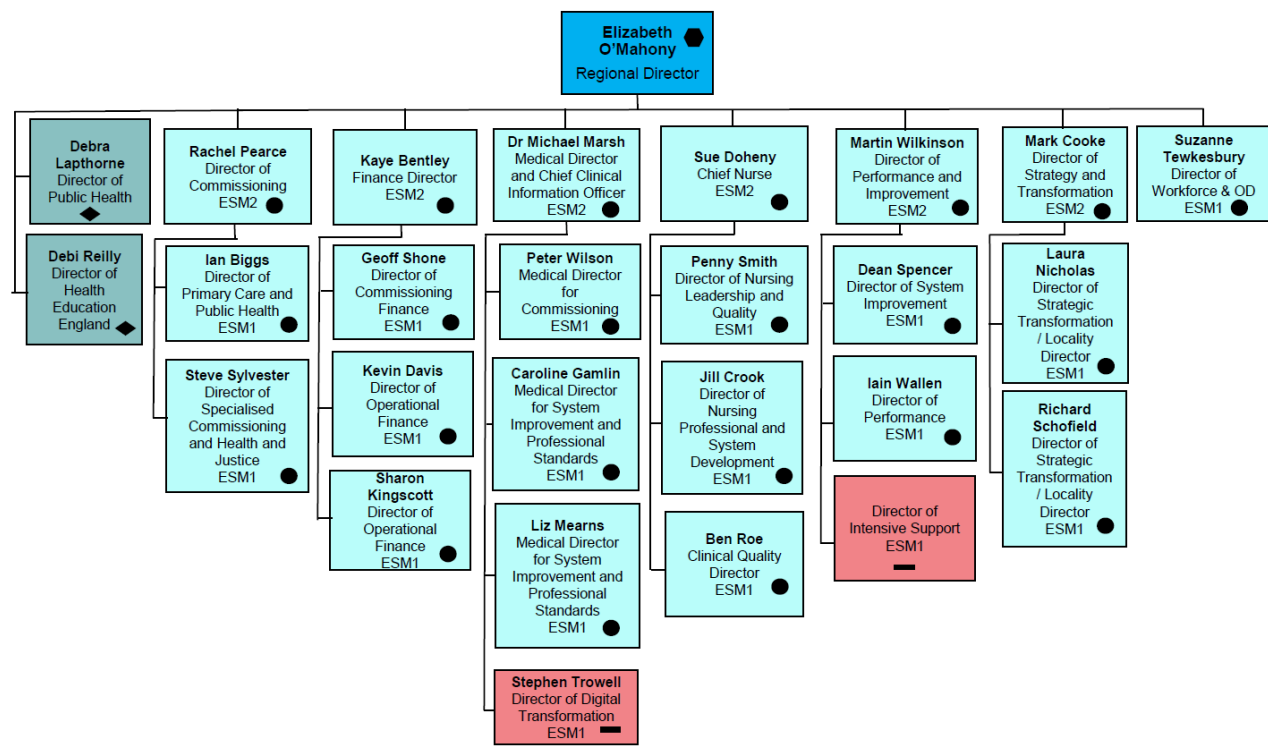
Welcoming New SW Clinical Senate Council members

- **Matthew Dolman** - SW Academic Health Science Network (SWAHSN)
- **Sharon Brown**-Radiology
- **Peter Davis** –Paediatric Intensivist
- **Rhys Hancock** –SWAST
- **Neil Hopper** – Surgery- Vascular
- **Michelle Mullan** – Surgery-Breast
- ***Christine Spray** – Paediatrics
- **Peter Wright** – Scientific Services

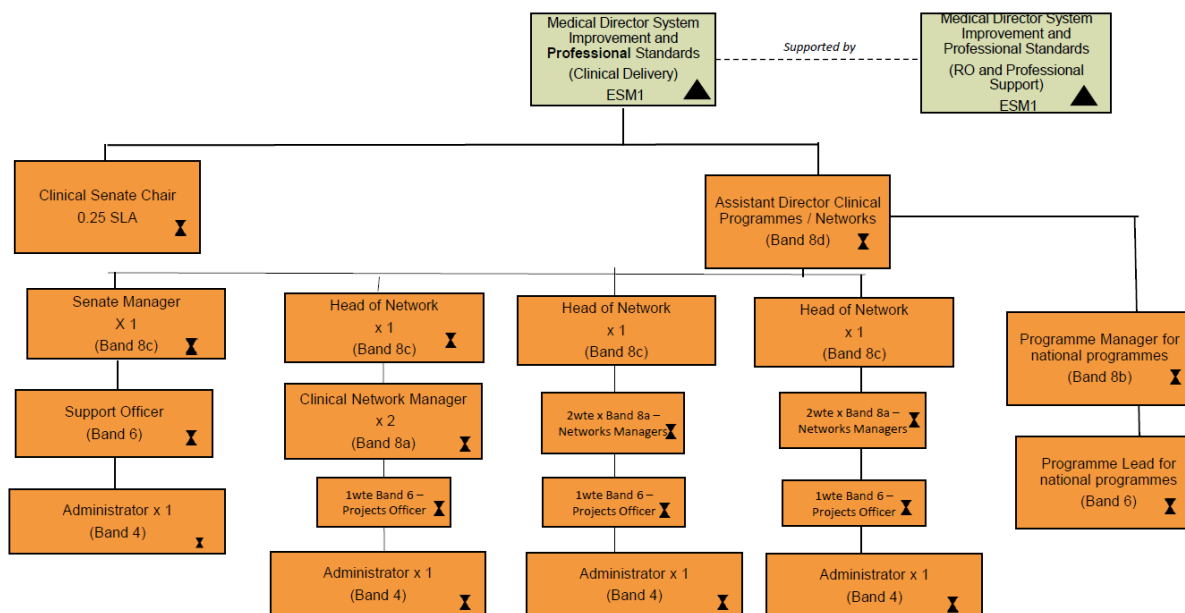
2020 Vacancies

- Social Care x 2*
- Oncology
- Emergency Medicine*
- Dentistry*
- HEE
- Dorset Members (4 – 1x Neonatal Consultant, 2 x Maternity Network Leads, 1 x GP)
- Network Leads TBC

Regional ESM Structure



Medical: Clinical Delivery (previously Senate and Clinical Networks)



Climate Change Recommendations

- Excellent feedback to date, shared nationally.
- South West NHSEI Lead agreed to help take forward recommendations.
- Links to Green NHS materials being proposed
- SW Councils and Partners on the Climate Emergency-invitation
- Media coverage
- Joint medical school/NHS educational event 'Waking up to the planetary health emergency' invite (plus further academic interest).
- RMOC discussed the environmental impact of inhalers, anticipated as a work stream and in the draft PCN contract.

Senate Council Attendance

Council position	Total % Attendance
Chair	80
Vice Chair	80
CA Chair	60
WEAHSN	60
Public Health England	40
Speciality Medicine	40
Speciality Medicine	0
Speciality Medicine	20
Speciality Medicine	0
Specialty Surgery	60
Specialty Surgery	40
GP	60
Mental Health	100
Care of Older People	80
Care of Older People	75
Nurse	50
Nursing	20
Nursing	50

AHP	50
AHP	40
Public Health	40
Children	60
Pharmacy	20
Clinical Strategy	80
Maternity Network Clinical Lead	75
Mental Health Network Lead	25
Cancer Alliance Lead	60
Dementia Network Lead	40
STP Lead (BSW)	25
STP Lead (BNSSG)	0
STP Lead (Gloucestershire)	25
STP Lead (Kernow)	50
STP Lead (New Devon)	25
STP Lead (Somerset)	75

Strong Representation

BNSSG: 28 members

Devon: 28 members

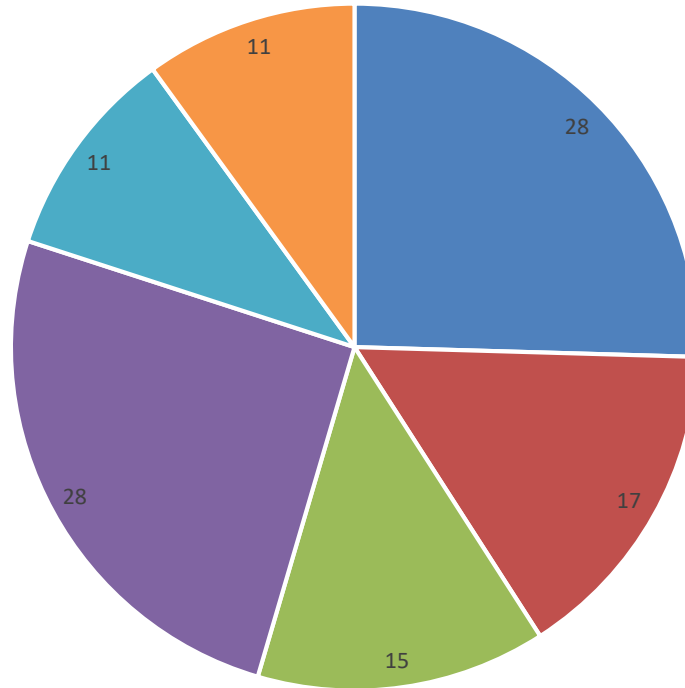
Recruitment Focus

Somerset: 11 members

Gloucestershire: 11 members

Dorset

Senate Assembly Membership- STP Area



■ BNSSG ■ BSW ■ Cornwall ■ Devon ■ Gloucestershire ■ Somerset



Strong Representation

Specialty Medicine: 33
members

Mental Health: 11
members

Nursing: 11 members

Specialties to focus on:

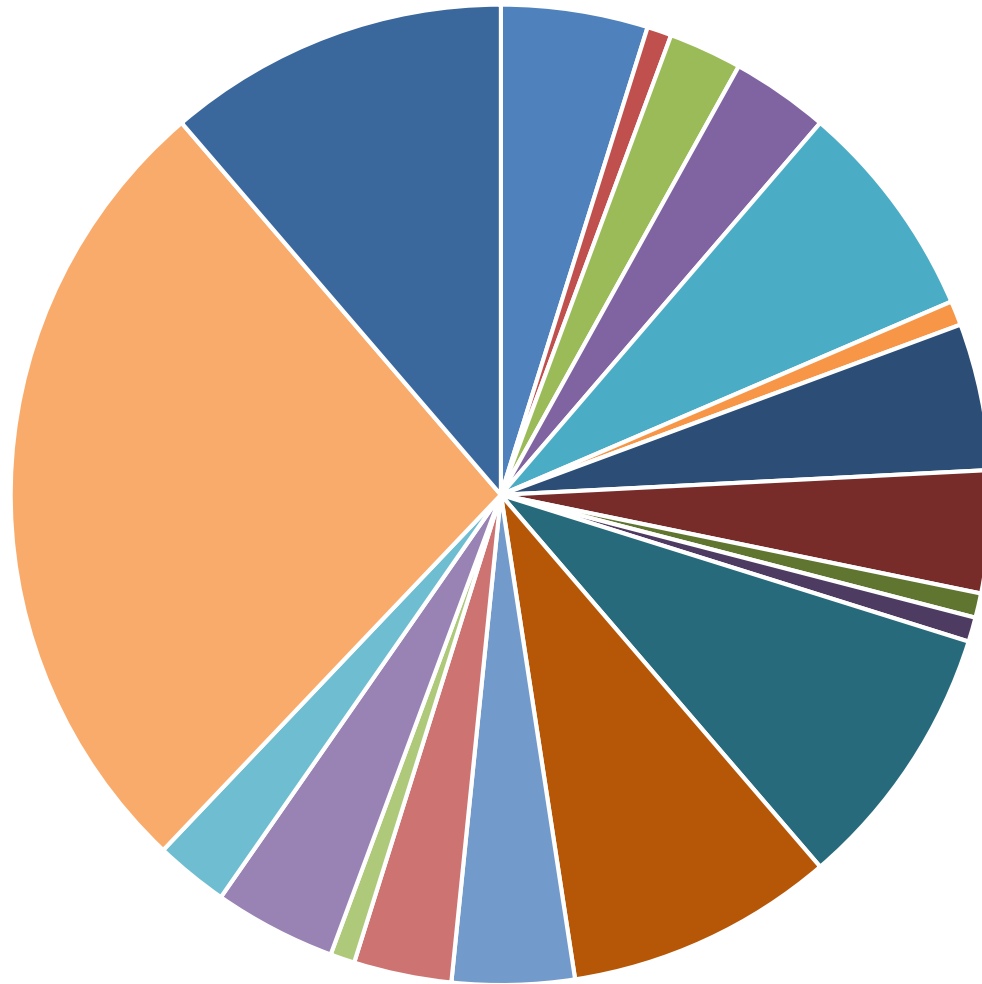
Public Health: 1
member

Dentistry: 1 member

Medical Scientist: 1
member



Clinical Specialty



- AHP
- Children
- Medical Director
- Oncology
- Social Care
- AHSN
- Dentistry
- Medical Scientist
- Pharmacy
- Specialty Surgery
- Ambulance
- Public Health
- Emergency Medicine/Surgery
- GP
- Care of Older People
- Radiology

Group Work

1. Future Topics
2. Increasing the impact of Recommendations
3. Different ways of working in the Council

Topics

- Social Care Integration
- Digital Innovation and Modernising Outpatients
- Diagnostic Reporting/Screening Pathways
- End of life care
- Obesity and Social Prescribing/type 2 diabetes management
- Emergency General Surgery follow up
- Workforce follow up
- Wellbeing in the Workforce
- Productive Ageing
- Mental health – Crisis Pathways and STP Clinical Models